

Machines for the Foundry Industry



Werner-von-Siemens Str. 2, D-64319 Pfungstadt
 Tel.: +49(0)6157 402-9982
 Fax: +49(0)6157 402-9989
 Homepage: www.hoppeschwingtechnik.de

Vibrating feeder with unbalance motor HFU

This type of machine is used for the transport of castings and/or sand at low temperature.

Standard Dimension

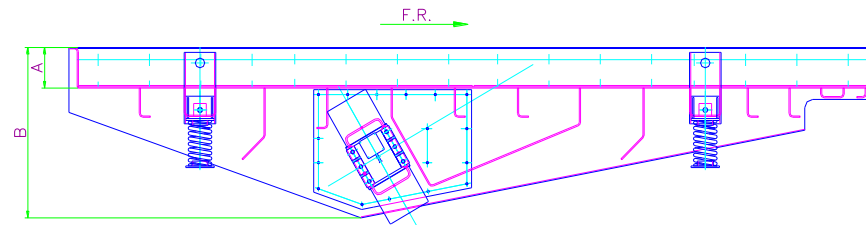
Length: 1000 mm, 1500 mm, 2000 mm, 2500 mm, 3000 mm, 3500 mm, 4000 mm, 4500 mm, 5000 mm, 5500 mm, 6000 mm, 6500 mm, 7000 mm, 7500 mm, 8000 mm

Non-standard length are realized by using an additional end discharge.

Width: 400 mm, 600 mm, 800 mm, 1000 mm, 1200 mm, 1400 mm, 1600 mm, 1800 mm, 2000 mm

Other dimensions are available as per request.

Vibration data: 1000 rpm with 8 mm Amplitude
 1500 rpm with 3 mm Amplitude



Unbalance motors at the side or at the back.
 Different wear plates are available in S235 JRG 2, Hardox or others.
 A rubber inlet against noise between trough and wear plates is available.
 Optionally cooscilating hood with dedusting exhaust is available.
 Optionally heating elements are available against sand cake.
 Always steel springs are used and no rubber springs.

Please send us the following data to work out an offer for you:

Needed data

Material:
 Feed rate:
 Length:
 Width:
 Temperature of castings:
 Temperature of sand:

Example

Castings
 100 t/h
 6000 mm
 1400 mm
 300° C
 120° C

Please send us your foundry layout or a drawing of your molding line and we will prepare a project layout for you.

For further information please call: +49(0)6157 402-9982(Germany)
 or send an Email to hoppe@hoppeschwingtechnik.de

